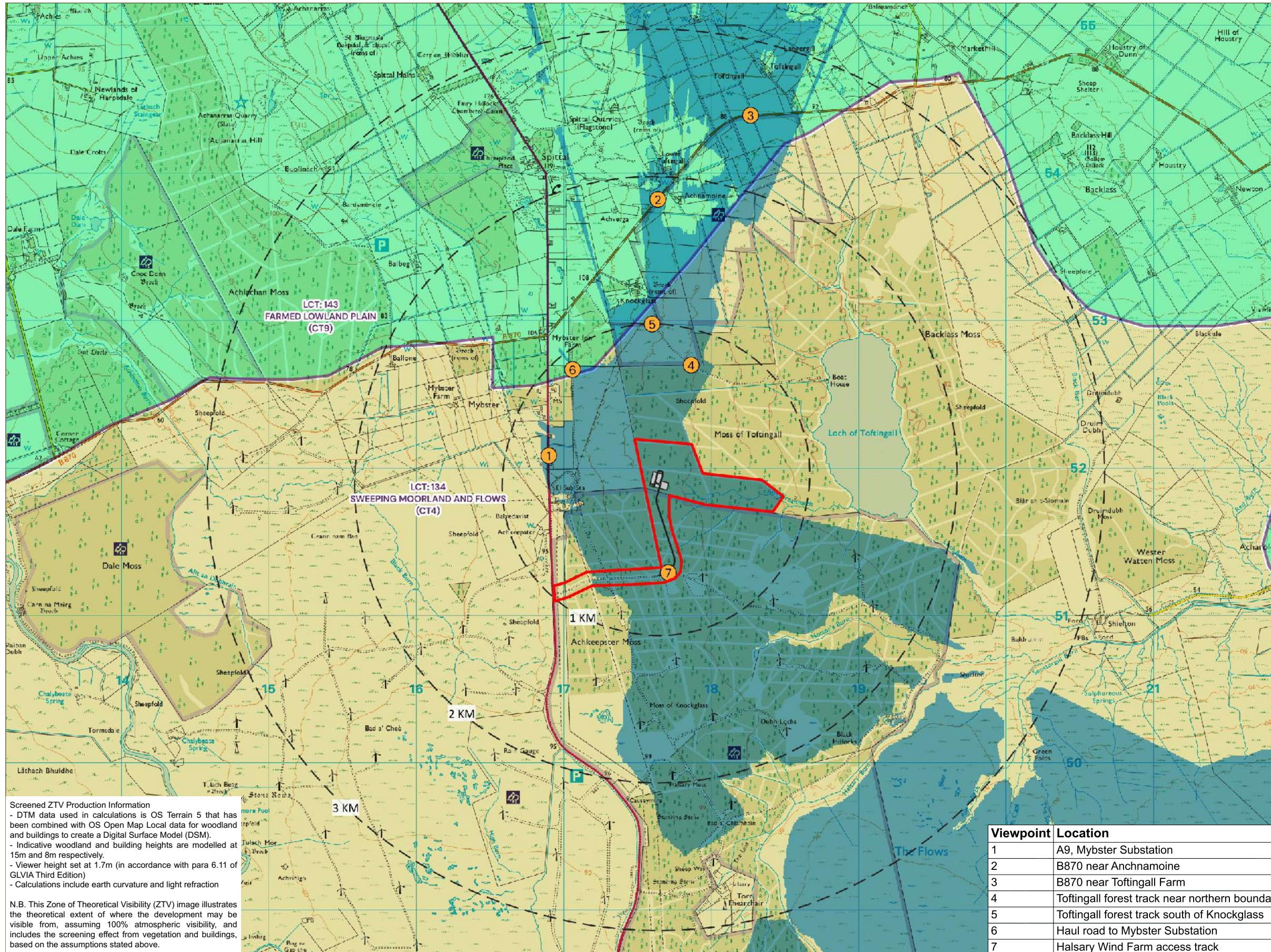


Figure 6.4 - Landscape Character Types with SZTV and Viewpoints



**Screened ZTV Production Information**  
 - DTM data used in calculations is OS Terrain 5 that has been combined with OS Open Map Local data for woodland and buildings to create a Digital Surface Model (DSM).  
 - Indicative woodland and building heights are modelled at 15m and 8m respectively.  
 - Viewer height set at 1.7m (in accordance with para 6.11 of GLVIA Third Edition)  
 - Calculations include earth curvature and light refraction

N.B. This Zone of Theoretical Visibility (ZTV) image illustrates the theoretical extent of where the development may be visible from, assuming 100% atmospheric visibility, and includes the screening effect from vegetation and buildings, based on the assumptions stated above.

Viewpoint	Location
1	A9, Mybster Substation
2	B870 near Anchnamoine
3	B870 near Toftingall Farm
4	Toftingall forest track near northern boundary
5	Toftingall forest track south of Knockglass
6	Haul road to Mybster Substation
7	Halsary Wind Farm access track

**Legend:**

- Site Boundary
- Study Area
- L VIA Viewpoint
- Proposed Battery Compound & Access Track

**Screened ZTV**

- Battery Storage units theoretically visible (maximum height 4 m)

**Landscape Character Types (NatureScot 2019)**

- LCT 134 Sweeping Moorland and Flows (CT6)
- LCT 143 Farmed Lowland Plain (CT9)

---

**Title**  
Landscape Character Types with SZTV and Viewpoints

**Project:**  
Loch Toftingall BESS

**Source:**  
© Crown copyright and database rights 2023  
Ordnance Survey 0100031673

**Client:**  
Boralex

<b>Drawn by:</b> DG	<b>Checked:</b> DT
<b>Date:</b> August 2023	<b>Figure:</b> 6.4
<b>Scale:</b> 1:27,000 @ A3	<b>RevisionNo.:</b> -

**BORALEX**  
**PEGASUS GROUP**