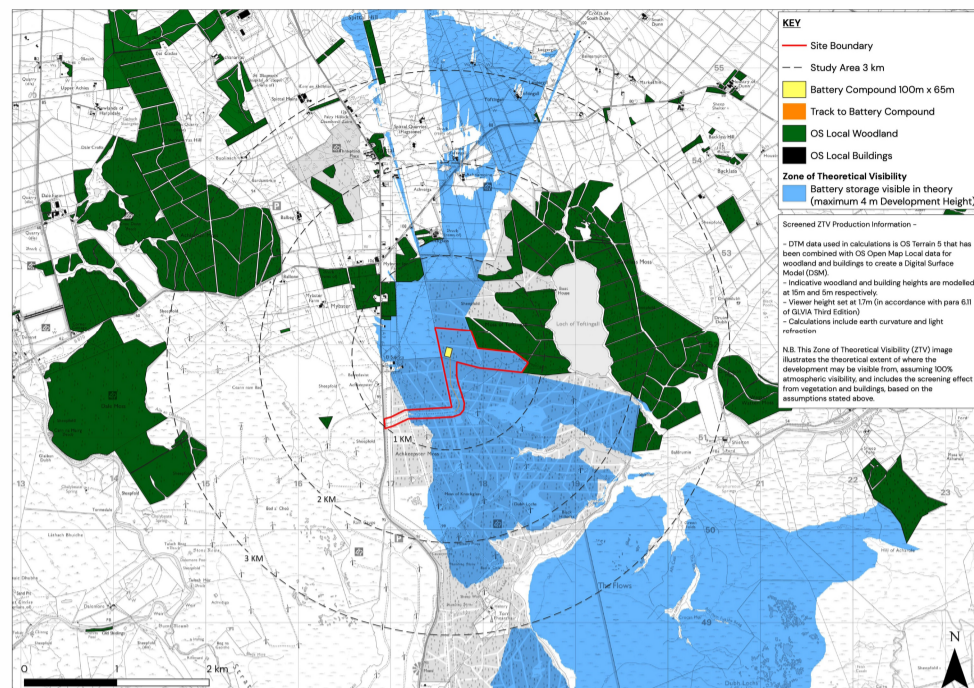


LANDSCAPE AND VISUAL IMPACT



A landscape and visual impact assessment establishes the potential effects of the proposed development on the surrounding landscape. The current design consists of a Battery Facility compound which is 100m by 65m with the maximum building or equipment height of 4m.

The preliminary Zone of Theoretical Visibility (ZTV) shown above is a computer-generated tool that establishes the likely extent of the visibility of a proposed development and key visual receptors. This ZTV is based on the relief of the surrounding area and also takes into account the screening effect of vegetation and buildings.

The assessment provided in the EIA report will include a number of photomontages from several agreed viewpoints near the site. The viewpoints are in the process of being agreed and site photography for the amended scheme which only includes the Battery Facility is due to be undertaken shortly.

The Battery Facility will be set within an area of landscaping. An indicative landscaping scheme is shown in the figure below. The area will be planted with native tree and shrub species common to Caithness such as Birch, Rowan and Ash. The landscaping area will provide effective visual screening and biodiversity enhancement.

The final EIA Report will include a number of local viewpoints and provide further detail on each one. Once submitted to The Highland Council these photomontages will be available to view/download from the Project website.

