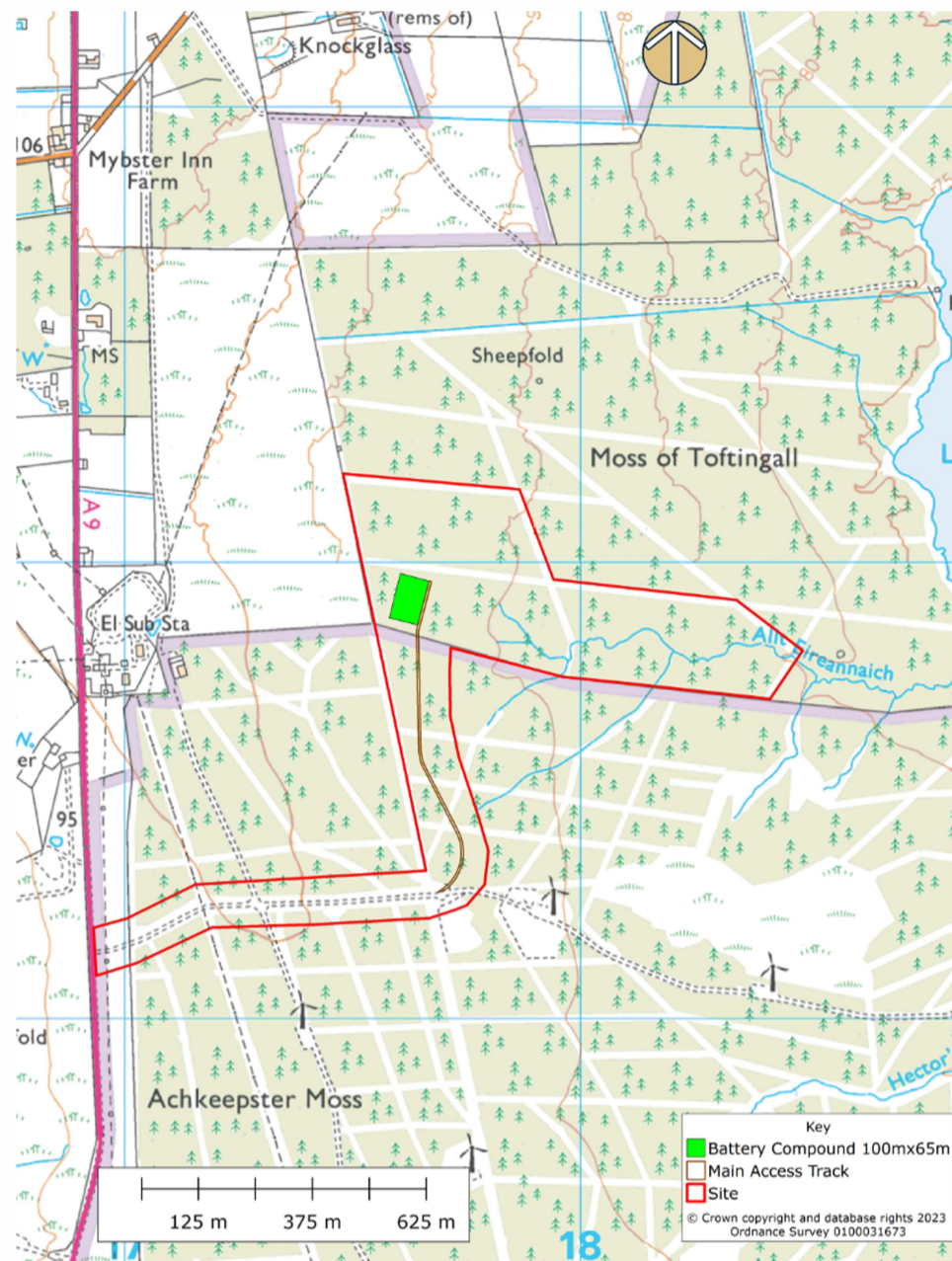


THE PROPOSED LAYOUT



How have our studies influenced the layout?

The proposed development has gone through a number of design iterations. In May 2019 a scoping opinion was requested from Highland Council with input from a range of other consultees. At this stage the site area was much larger and the proposal consisted of six wind turbines and a battery energy storage facility.

This was amended largely as a result of pre-application consultation with The Highland Council so that it included only two wind turbines instead of six, together with the retention of the Battery Energy Storage Facility, which was sized at a capacity of 40MW and located in the south western part of the site area.

At the first round of community open days at the end of January, the majority of local residents who attended and/or responded using feedback forms made it clear that they objected to the two wind turbines. This was primarily due to potential cumulative effects as a consequence of the large number of existing turbines nearby. In response to the feedback, it was decided to remove the two turbines from the project.

The proposal therefore now only consists of a battery energy storage system in the same location as previously indicated.

There would also be an access track to the facility through the northern part of the Halsary wind farm.