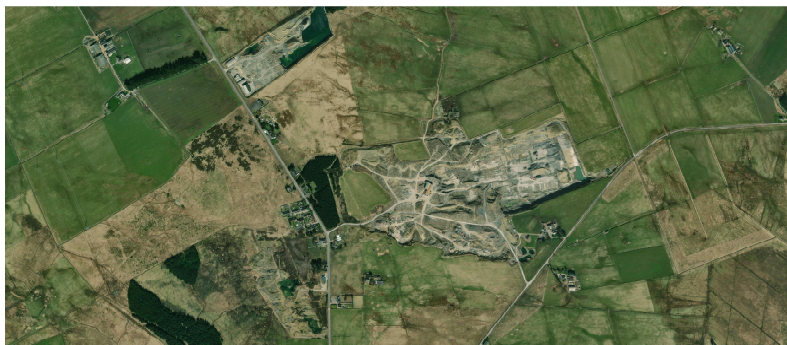


THE LOCAL COMMUNITY



Loch Toftingall Wind Farm will work closely with local communities, businesses and residents in seeking to ensure that the project will bring tangible benefits to local people and help meet the national climate change and energy security need.

Business, Jobs and Investment

We would like to hear from local businesses to ensure that we can fully consider the skills and services of local people and suppliers if the Loch Toftingall Wind Farm receives approval.

The opportunities available would include:

- An engineering, procurement and construction contractor;
- Construction material suppliers: concrete, aggregate and building materials;
- Electrical contractors: supply and installation of plant, cabling, earthing, etc.;
- Plant and equipment hire contractors: excavation earthworks, cranes, welfare units, etc.;
- Labour hire companies: engineers, plant operatives and general labourers; and
- Transport: taxis and minibuses for local labourers.

Local Accommodation Providers

Construction projects of this nature typically require some specialist technicians who may have to come from outside the area, so they will require local accommodation and catering facilities.

Community Benefit

Community Benefit is something that comes as part and parcel of renewable energy developments these days and whilst it is not considered in terms of the planning application, the Scottish Government has set the bar in terms of the amount a project is expected to contribute. This amount is £5,000 per MW of operational capacity.

With Loch Toftingall Wind Farm, this would mean up to £36,000 per year for the lifetime of the scheme depending on the final capacity of wind turbines.

We want to try to ensure that the funds help the surrounding communities become more resilient and sustainable in the long term. Following initial feedback, we will work with the local community funding bodies to ensure the proposed funds are able to address the needs of your community.

There are many options open to the community on how to use this community benefit to generate additional income. The Scottish Government would like to see communities maximising the potential a project such as this wind farm can bring through investment, and increased shared ownership is one of its primary aims going forwards.

Please feel free to write any ideas that you have on how community benefit could make a positive contribution to your local community on a 'Voice Your Opinion' comment form, which is available from the reception desk.