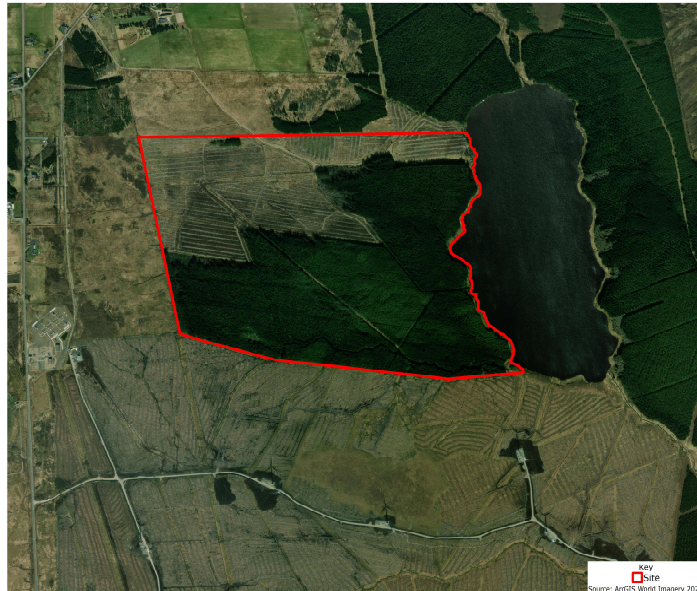


# THE PROPOSED DEVELOPMENT



Infinergy is currently designing a proposal for up to two wind turbines and a battery energy storage facility on land located to the north of Halsary Wind Farm, south of Spittal in Caithness.

At this stage, turbine tip heights of up to 149.9 metres are being proposed with an installed capacity of up to 7.2 Megawatts (MW). In addition, a 40MW Battery Energy Storage Facility will be located in the south western part of the site.

The Battery Energy Storage facility would store electricity from the two wind turbines and feed this into the electricity network when it is most needed. It would also be able to take renewable electricity from the network, store it, and then feed it back when it is most needed, thereby making the electricity system more efficient and flexible.

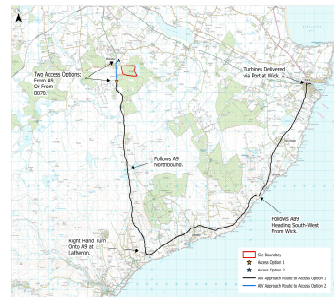
Land within the site that is currently plantation will be felled and over a period of years carefully restored to peatland. This is effectively the same restoration proposal as within the neighbouring Halsary wind farm site. The peatland restoration proposals would provide important biodiversity enhancement.

Environmental, technical and commercial considerations throughout the assessment process will continue to inform the turbine positions as well as their dimensions and the design of the Battery Energy Storage Facility.

Submission of the planning application for Loch Toftingall Wind Farm is expected to be Summer 2023.

## Construction and Access

Should Loch Toftingall Wind Farm be consented, construction would not be expected to commence until approximately autumn 2024.



Along with the wind turbines and battery energy storage facility, the proposed development will consist of a temporary construction compound; access tracks; crane hardstanding areas; and a substation to allow the green electricity generated to feed into the electricity network.

## Route to Site and Access

The potential effects of construction traffic will be assessed throughout the design and Environmental Impact Assessment (EIA) process, and in consultation with The Highland Council (THC) and Transport Scotland.

At present, turbine deliveries are expected to arrive at Wick Harbour. The turbines would exit the harbour and continue along the A99 to Latheron and then northwards along the A9.

Access into the site would be from the south off the A9 either via the northern access into the Halsary Wind Farm, initially using the existing wind farm track and then using a new stretch of track northwards or alternatively an access track from the north using the existing forestry track from the B870.